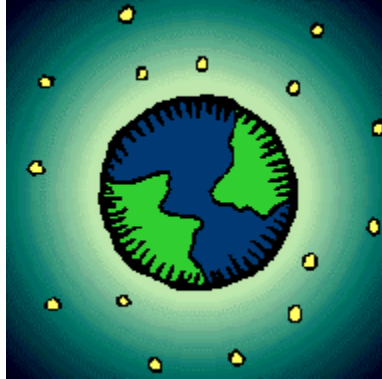


# Summative Assessment #3 for Outer Space and Cyber Space



## Table of Contents

<b>Item</b>	<b>Page</b>
Planets in Cyber Space, Summative Assessment #3 Instructions	page 2
Planets in Cyber Space, Summative Assessment #3 Rubric	page 3

## **Planets in Cyber Space**

Summative Assessment #3

Performance Assessment

**Duration:** This is an activity that will take eight 30-minute sessions to complete.

**Standards Assessed:** LA.B.2.2.4.4.1, LA.B.2.2.6.4.1, LA.B.2.2.6.4.2, LA.B.2.2.6.4.7

**Description of Assessment Activity:** This assessment evaluates the student's report that has been written during the last eight days. The student has a copy of the rubric that has been explained. The student has been given many opportunities to self-assess using the rubric and has been encouraged to have a peer use the rubric to give feedback to the student during the editing process. The teacher uses the rubric to assess and evaluate the final report that the student submits via SiteMaker.

**Teacher Directions:** Upon final submission of the student's report via SiteMaker, use the rubric to assess and evaluate the report.

**Student Directions:** Use your copy of the rubric to self-check as you are writing your report. Ask a friend to edit your report using the rubric. When you are confident your writing meets the criteria on the rubric, you may submit your SiteMaker project to your teacher.

**Scoring Method and Criteria:** A rubric has been provided in the assessment package that accompanies this unit. A scoring guide completes the rubric tool.

Name \_\_\_\_\_

Date \_\_\_\_\_

## Planets in Cyber Space

### Summative Assessment #3

Standard	3	2	1	0
<b>LA.B.2.2.6.4.1</b>  <b>(Focus)</b>	<input type="checkbox"/> The writing has a main idea, <b>and</b> all sentences focus on the main idea.	<input type="checkbox"/> The writing has a main idea, <b>but</b> not all sentences focus on the main idea, <b>or</b> the writing is focused <b>but</b> there is no main idea.	<input type="checkbox"/> The student does not remain focused on the writing.	<input type="checkbox"/> No attempt was made to write a report. The student would not accept help.
	<input type="checkbox"/> The same ideas are not repeated.	<input type="checkbox"/> Some ideas are repeated.	<input type="checkbox"/> Many ideas are repeated.	
<b>LA.B.2.2.6.4.2</b>  <b>(Support)</b>	<input type="checkbox"/> The student writes more than one supporting idea with facts and information that matches the main idea.	<input type="checkbox"/> The student writes supporting ideas, <b>but</b> they are not focused on the main idea, <b>or</b> only one supporting idea is written.	<input type="checkbox"/> The student attempts to write supporting ideas, <b>but</b> they are not focused on the main idea.	<input type="checkbox"/> No attempt was made to write a report. The student would not accept help.
<b>LA.B.2.2.6.4.7</b>  <b>(Varied sentence structure)</b>	<input type="checkbox"/> The student uses a variety of sentence types to present ideas. (Simple, compound, <b>and</b> complex sentences)	<input type="checkbox"/> The student uses <b>some</b> variety of sentence types to present ideas, <b>but</b> most sentences are the same type.	<input type="checkbox"/> The student uses little or no variety of sentence types to present ideas.	<input type="checkbox"/> No attempt was made to write a report. The student would not accept help.
<b>LA.B.2.2.4.4.1</b>  <b>(Uses computers)</b>	<input type="checkbox"/> The student successfully uses computers to publish the final copy of their report with little help from the teacher.	<input type="checkbox"/> The student successfully uses computers to publish the final copy of the report, <b>but</b> much help from the teacher was necessary.	<input type="checkbox"/> The student tries to use computers to publish the final copy of the report <b>but</b> was not successful.	<input type="checkbox"/> No attempt was made to write a report. The student would not accept help.

The students must write to levels 3 or 2 for each standard to be considered satisfactorily completed. Students not writing to at least level 2 should be retaught and reassessed. Mark each appropriate box, then add the points earned to calculate total points earned. Suggested point conversion: A = 15 - 13, B = 12 - 10, C = 9 - 7, D = 6 - 4