

Sunshine State Standards

For

Eye on the Sky

This is optional. It is a good idea to post the standards and GLEs in your classroom so students, parents, principals, and visitors will know the focus of your instruction.

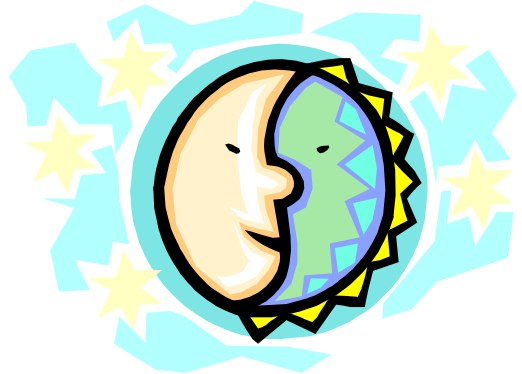
SC.E.1.1.1.1.1



The student knows that the amount of light reflected by the moon is a little different every day but the moon appears the same again about every 28 days.

SC.E.1.1.2.1.1

The student knows that night and day are caused by the rotation of the Earth.



SC.E.2.1.1.1.1



The student knows and differentiates objects seen in the day and night sky (for example, clouds, sun, stars, moon, planets).

SC.B.1.1.1.1.1

The student knows that heat from the sun has varying effects depending on the surface it strikes.

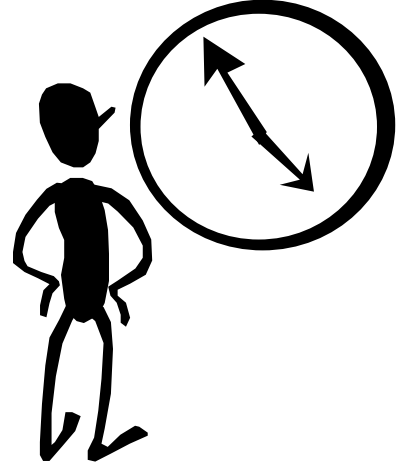


MA.B.3.1.1.1.2



The student estimates and measures the passage of time using before or after; yesterday, today, or tomorrow; day or night; morning, afternoon, or evening; hour or half-hour.

MA.B.4.1.2.1.2



The student
knows

appropriate tools
(clocks and calendar)
for measuring time
(including days,
weeks, months).

LA.A.2.1.5.1.1

The student uses simple reference material to obtain information (for example, table of contents, fiction and nonfiction books, picture dictionaries, audio visual software).

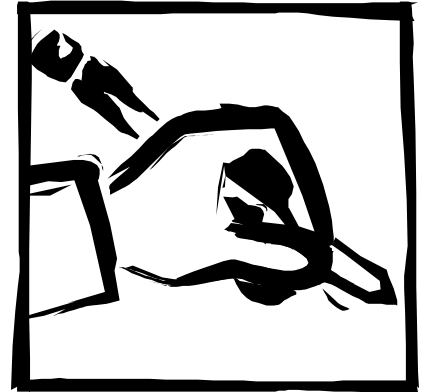


LA.B.2.1.4.1.1



The student writes simple informational texts (for example, two-step instructions in sequence, directions, reports).

LA.B.1.1.3.1.4



The student
uses complete
sentences in writing.