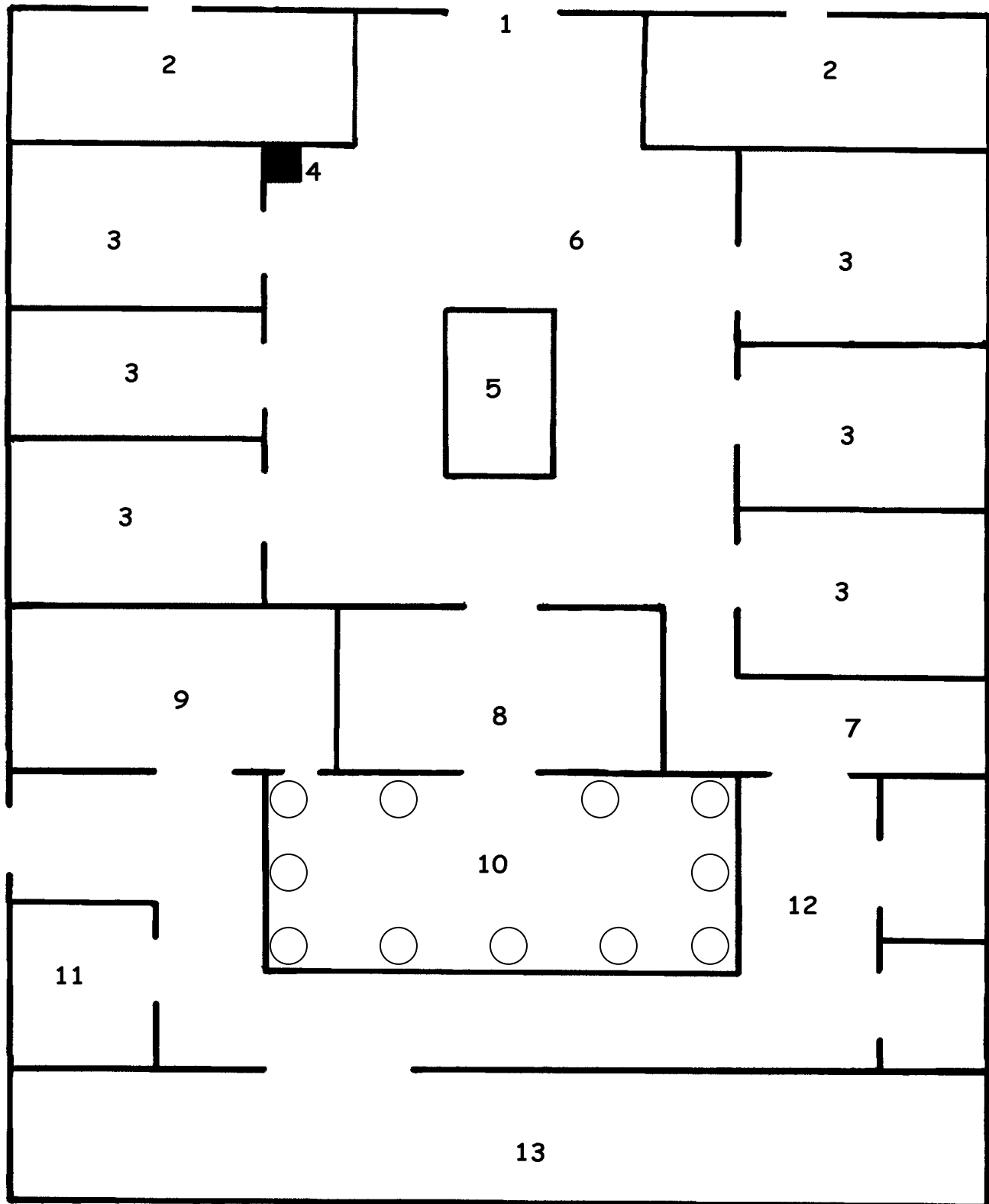


# Domus Romana Floor Plan



# Vocabulary List

1. *ianua* – the outer door of a house
2. *taberna* – a shop; wealthy Romans frequently rented the front areas of their homes
3. *cubiculum* – a bedroom
4. *lararium* – the shrine of the household gods
5. *impluvium* – a basin for capturing rainwater, which fell through a hole in the roof called the *compluvium*
6. *atrium* – a large open reception area
7. *ala* – an alcove where guests waited
8. *tablinum* – a study; the head of the household would receive guests, conduct business, store records, and keep the *imago*, wax masks, of his ancestors there
9. *triclinium* – the dining room
10. *peristylum* – a garden surrounded by a colonnade of pillars
11. *culina* – the kitchen
12. *porticus* – a gallery
13. *hortus* – a garden

# Instruction Sheet

## *Domus Mea: My House*

1. Establish the size and medium (poster board / construction paper) for the floor plan of your house or dream house.
2. Use as many Latin words from the Vocabulary List as possible to identify rooms or spaces on your floor plan. The rooms/spaces should be identified according to their function. For example, any space where you would receive guests could be named an *atrium* and so on.
3. Describe the function of each space identified on your floor plan.