



*Assessment Rubric

ONE-PAGER

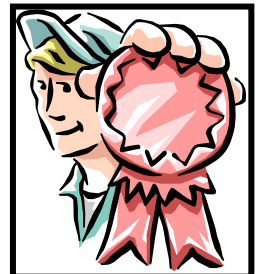
Freak the Mighty

By Rodman Philbrick

Criteria	4 EXCELLENT	3 GOOD	2 FAIR	1 UNSATISFACTORY
PLOT: "What" and "Why"	Both <i>plot</i> parts are fully developed.	One of the <i>plot</i> parts is fully developed and the less developed part is at least addressed.	Both <i>plot</i> parts are addressed but not fully developed.	Neither <i>plot</i> parts are fully developed.
SETTING: "When" and "Where" and	Both <i>setting</i> parts are fully developed.	One of the <i>setting</i> parts is fully developed and the less developed part is at least addressed.	Both <i>setting</i> parts of the story are addressed but not fully developed.	Neither <i>setting</i> parts are developed.
CHARACTERS: "Who" Described by behavior, appearance, personality, and character traits.	The main <i>characters</i> are fully developed with much descriptive detail. The reader has a vivid image of the characters.	The main <i>characters</i> are developed with some descriptive detail. The reader has a vague idea of the characters.	The main <i>characters</i> are identified by name only.	None of the <i>characters</i> are developed or named.

YOUR SCORE

Plot:	1	2	3	4
Setting:	1	2	3	4
Characters:	1	2	3	4



LA.E.1.3.2.6.1 The student describes or illustrates the setting in a literary text.

LA.E.1.3.2.6.2 The student explains character development in a literary text.

LA.E.1.3.2.6.3 The student creates a graphic organizer that represents the complex elements of a plot in a literary text.

COMMENTS

PRAISE:

POLISH:

QUESTION:

Title of book & author

description of setting

Maximum 50 words!

illustration of setting

character development

Maximum 100 words

**graphic organizer
representation of elements
of plot**

Overall rating of novel 