

Group One

What type of conflict exists between Sara Louise and Caroline? Why does Sara Louise despise Caroline so much? Does she really? How do we know? Give examples.

Group Two

What is setting? What are five examples of settings in the novel? Be specific, explain them and give details.

Group Three

Water is said to be symbolic of rebirth, peace and tranquility. How does the author use water to illustrate a rebirth of Sara Louise? (What happens each time she goes out to the water?) Give examples from the book.

Group Four

The author uses word choice and figurative language to make scenes and people come alive to the reader. As a group, find two examples and explain how these passages come alive to you. Then, write the sentence as if the writer was not very creative or didn't use specific word choice.

Suggested Answer Key for Band Together

Person vs. Person. Student answers may vary as to why Sara Louise really despises Caroline, but they should suggest that Sara Louise is envious of the attention Caroline gets because of her "delicate condition" and her singing talents. Whatever they suggest, they should be able to give some sort of example to back up their opinion.

Setting is the time and place of the action. Student examples will vary.

Each time Sara Louise ventures to the water, she is humorous, calm, and sure of herself. Student examples will vary.

Student examples will vary. But they should give two examples of places where word choice and figurative language make the scene and people come alive. A re-write of the sentence should be included. This illustrates how the first sentence is really better than the other.

Journal Entry Chapter 1

1. Ch-Ch-Ch-Changes!

Remember that change is more than physical! Describe how the following characters were before this chapter and how events in this chapter changed them.

Hiram Wallace
Sara Louise

2. Explain why a novel elicits a wide variety of responses from people.

Suggested Answers for Chapter 11

Student answers will vary, but they may suggest the following:

Hiram Wallace started as an enigma. He was a mysterious stranger that piqued the interest of the people in the town. When he meets Sara Louise and Call, his identity is verified and he becomes a friend to them both. As their friendship progresses, we find that the Captain is a nice, generous and humorous person. After the incident with the cats, we first saw the Captain as a little heartless, but then when he can't kill the cats, we see that he is really a "softy." After the incident with the hurricane, the Captain becomes more vulnerable. When he donates the money to Caroline, and not to Sara Louise, we see that he is generous, but a little blind to Sara Louise's needs.

Sara Louise starts the novel as a humorous, wisecracking person. She sees herself as a little better than Call. As we get into the novel, we see that she has a self-esteem problem and has conflict with her Grandmother. Her problems with Caroline seem to grow with each word she has with her sister. The Jergens lotion incident makes Sara Louise seem slightly crazy with emotion. When she finds out that Caroline is going to get to leave the island, something inside Sara Louise seems to break. She becomes more introverted. Once she learns that she too will get to go to college and leave the island, she seems surer of herself. It is not until she delivers the two mountain twins that she loses her hate and envy of Sara Louise.

Journal Entries for Chapters 8 and 9

1. What is flashback?
2. Whose Point of View is the story told from? How does this help the reader?
3. Examine this quote from page 100, "No one bothered, not even my mother to call me Sara Louise, but he had done it without thinking. Strange how much that meant to me." Why does this mean so much to Sara Louise? Do you think this could be an example of foreshadowing? If so, what do you think will happen next?

Suggested Answers for Journal Entries for Chapters 8 and 9

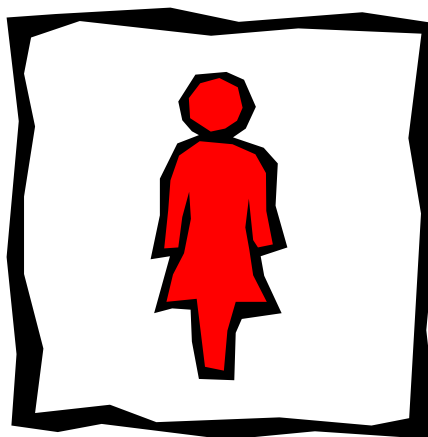
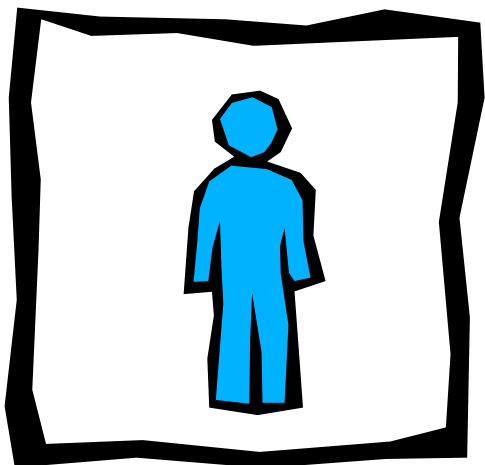
1. Students should be able to define flashback as a technique in which a writer interrupts a story to go back and explain an earlier event.
2. Students should explain that the story is told from Sara Louise/Wheeze's point of view. This helps the reader by being able to understand Sara Louise's feelings more intimately, provide more insight and/or understand her emotions more fully.
3. Student answers will vary. They may suggest that this shows that the Captain sees her more differently than everyone else and it takes Wheeze by surprise. She enjoys this newfound attention.

Journal Entry for Chapters 12-13

1. In the ongoing conflict between Sara Louise and Caroline, do you think that, according to Sara Louise, Caroline attempts to take over everybody else's life? Explain. Also explain what type of conflict this is.
2. Why do you think the Captain marries Trudy Braxton? Who does this change?
3. What's going on with the Grandmother in Chapters 12-13? How has she changed?

Suggested Answer Key for Chapters 12-13

1. This is person-to-person conflict. Student answers will vary.
2. Student answers will vary. The changes could affect the Captain, Trudy and/or Sara Louise.
3. Students' answers will vary. But they should suggest that the Grandmother is having some sort of mental breakdown. She has become more hateful and spouts more biblical references.



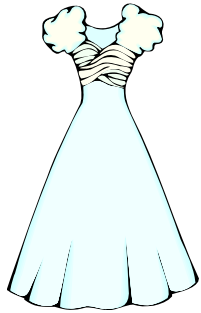
Symbols in
our daily
lives.



Examples of Symbolism



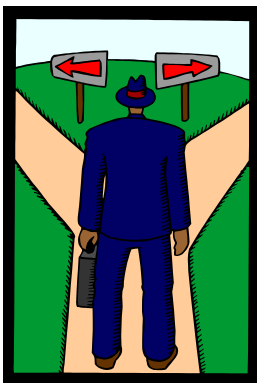
Black generally means death.



White means purity or newness.
However, in Asian societies, white
is symbolic of death.



A lion can be symbolic of courage.



A voyage or journey can be
symbolic of life.

How can we know if an author is using symbolism?

- The writer may use accepted forms of symbolism.
- The writer may use comparison to make the symbolism stand out.
- The writer may give enough clues in the piece for people to understand the symbolism.
- But, in some written pieces, the symbolism can be subjective because every one interprets things differently. What the writer writes may impact me a certain way because of my understanding of things.