



# OF SYMMETRY

You can make something symmetrical with the letter B.

The letter B is a pattern.

- 1) You need a piece of colored construction paper. You may use any color you like. The construction paper is on the table near the letter B. Go now. Get one piece of paper and one letter B.
- 2) Lay the paper horizontally on the table in front of you.
- 3) Lay the letter B on the construction paper. Place it on the right side of the paper.
- 4) Use a pencil to trace the letter onto the paper. Do not press too hard. Do not make a dark line. Make it a light line. Make a line you can see.
- 5) Next, flip the B horizontally.
- 6) Line up the flipped B with the first B. Make a line of symmetry. Trace the flipped B as before.
- 7) Cut out around the outside edges of the whole traced design.
- 8) Cut out the four center areas of the design.
- 9) Use one pipe cleaner, any color.
- 10) Take one end of the pipe cleaner. Roll it up two times. Make a small ball at the tip.
- 11) Do the same to the other end.
- 12) Fold the pipe cleaner in half.
- 13) Tape the folded end to the under side of the design at the line of symmetry. The rest of the pipe cleaner will be sticking out.
- 14) Lay the design face down on the table.
- 15) Choose four squares of colored tissue paper. Lay one square over each cut out space.

**THINK.** The design must be symmetrical.

**STOP. ASK THE TEACHER TO CHECK YOUR WORK.**

Are the color squares right? Is the design symmetrical?

- 16) Glue the colored squares in place. Glue on the back of the design.
- 17) Turn the design over.
- 18) Decorate the edges of the \_\_\_\_\_ . You may use crayons. You may use any art supplies. **THINK** as you decorate. The \_\_\_\_\_ must be symmetrical.
- 19) Tape the \_\_\_\_\_ in the window and let the sun shine through the tissue spaces.



READ  
AND  
MAKE



# Literacy Link



Directions:

Predict which letters of the alphabet are symmetrical by coloring the square light green.

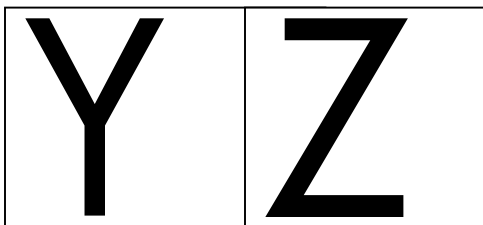
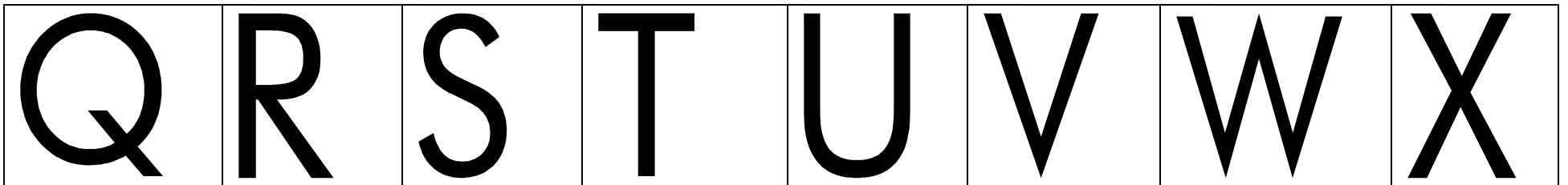
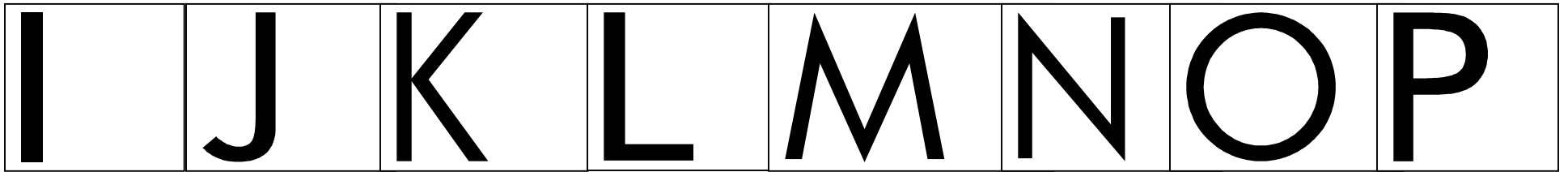
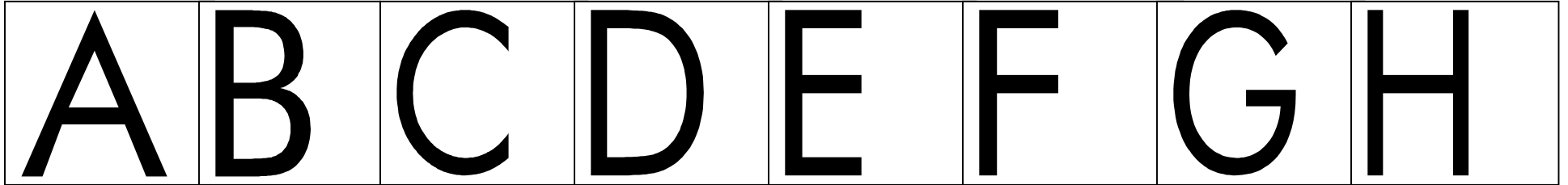
Check your predictions by using a mirror.

Use a pencil to draw a vertical line through the middle of each letter.

This will be a way to check your predictions.

If the letter is symmetrical the line you drew will be the \_\_\_\_\_.

Write the symmetrical letters on the line at the bottom of the page.

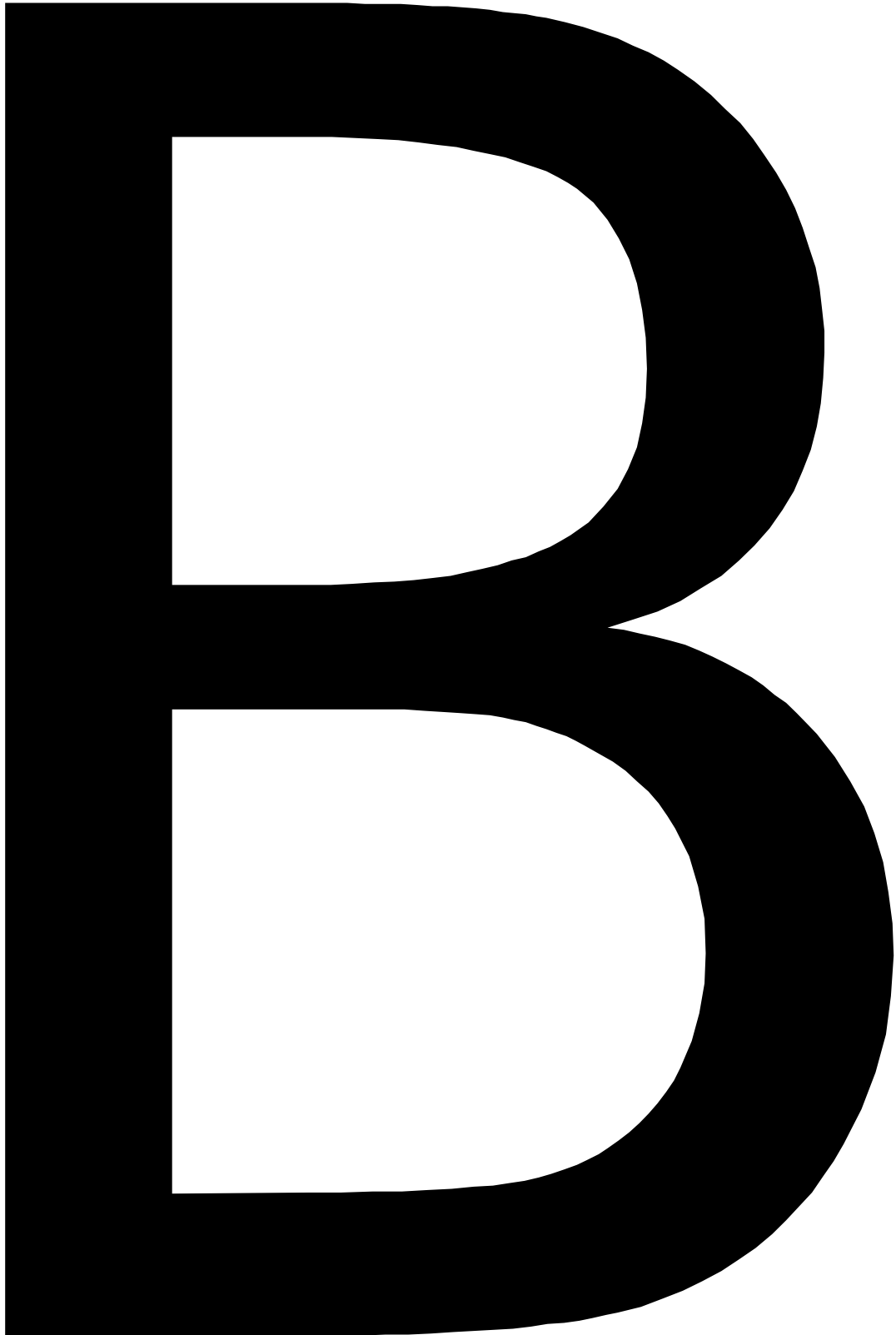


The symmetrical letters are \_\_\_\_\_

**At dinner tonight tell everyone what you made at school today. Tell how it was done.**

# Pattern 'B'

Print a copy of the B. Cut it out around the outside edges and inside each of the center sections. Lay it on heavy stock, such as poster board, and trace. Cut out the heavy stock B for students to use as a pattern. Make as many patterns as you feel will be necessary for the lesson to run smoothly without a line up waiting to use the B for tracing purposes.



## Samples

Note the difference in the two possible ways to create a line of symmetry; put the overlap the stems or place them edge-to-edge. Either way is correct. The difference in the way some students will do this can be a point of discussion (See # 7 in Procedures) and lead to further understanding of the line of symmetry.

