

# Student Score Sheet for Performing on Instruments Lesson Plan #1

Name of student: \_\_\_\_\_

Homeroom teacher: \_\_\_\_\_

Directions: Please check the appropriate results for each day. Reinforcement in areas whereby students have not shown mastery will be needed:

## Day 2

- \_\_\_\_\_ Student **is** able to perform the pattern given by the teacher by clapping it.
- \_\_\_\_\_ Student **is not** able to perform pattern given by the teacher by clapping it.
- \_\_\_\_\_ Student **is** able to identify the pattern given by the teacher with the manipulatives given.
- \_\_\_\_\_ Student **is not** able to identify the pattern given by the teacher with the manipulatives given.

## Day 3

- \_\_\_\_\_ Student **is** able to perform the pattern given by the teacher by clapping it.
- \_\_\_\_\_ Student **is not** able to perform pattern given by the teacher by clapping it.
- \_\_\_\_\_ Student **is** able to identify the pattern given by the teacher with the manipulatives given.
- \_\_\_\_\_ Student **is not** able to identify the pattern given by the teacher with the manipulatives given.

## Day 4

- \_\_\_\_\_ Student **is** able to perform the pattern given by the teacher by using a rhythmic instrument #1, maintaining a steady tempo.
- \_\_\_\_\_ Student **is not** able to perform pattern given by the teacher by using a rhythmic instrument #1 maintaining a steady tempo.
- \_\_\_\_\_ Student **is** able to perform the pattern given by the teacher by using a rhythmic instrument #2 while keeping a steady tempo.
- \_\_\_\_\_ Student **is not** able to perform pattern given by the teacher by using a rhythmic instrument #2 while keeping a steady tempo.

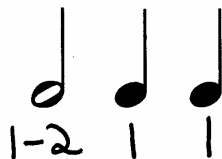
## Day 5

- \_\_\_\_\_ Student **is** able to perform the pattern given by the teacher by using a melodic instrument #1.
- \_\_\_\_\_ Student **is not** able to perform pattern given by the teacher by using a melodic instrument #1.
- \_\_\_\_\_ Student **is** able to perform the pattern given by the teacher by using a melodic instrument #2.
- \_\_\_\_\_ Student **is not** able to perform pattern given by the teacher by using a melodic instrument #2.

## Performing on Instruments Summative Test (Student Pattern Sheet)

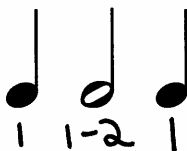
---

1.



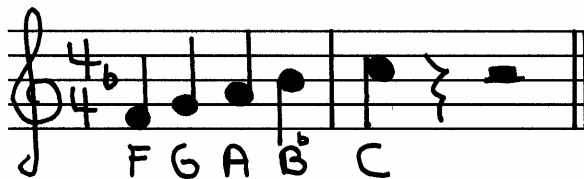
---

2.



---

3.



---

4.



Please note that these are the patterns that students will use during the summative as well as in future lessons. Make sure to draw these on the board and count out these patterns as they are demonstrated and used. Students need to be familiar with them prior to taking the summative assessment.