



### **SPRING DOESN'T BUG US!**

1. Cut a seven-inch circle(body), a three-inch circle (head), and four two-inch circles (spots from black construction paper).
  2. Cut a seven-and-one-half-inch circle from red construction paper. Fold the circle along the line of symmetry. Cut along this folded line to make two semicircles (wings).
  3. Glue the head to the top of the body. Glue two spots on each wing.
  4. Attach the wings to the top of the body with a brad.
  5. Bend a black pipe cleaner (antennae) in half and attach it to the back of the head.
  6. Glue your poem to the ladybug's body; then spread her wings so that your poem can be read and enjoyed by all.
- 

### **SPRING DOESN'T BUG US!**



1. Cut a seven-inch circle(body), a three-inch circle (head), and four two-inch circles (spots from black construction paper).
2. Cut a seven-and-one-half-inch circle from red construction paper. Fold the circle along the line of symmetry. Cut along this folded line to make two semicircles (wings).
3. Glue the head to the top of the body. Glue two spots on each wing.
4. Attach the wings to the top of the body with a brad.
5. Bend a black pipe cleaner (antennae) in half and attach it to the back of the head.
6. Glue your poem to the ladybug's body; then spread her wings so that your poem can be read and enjoyed by all.

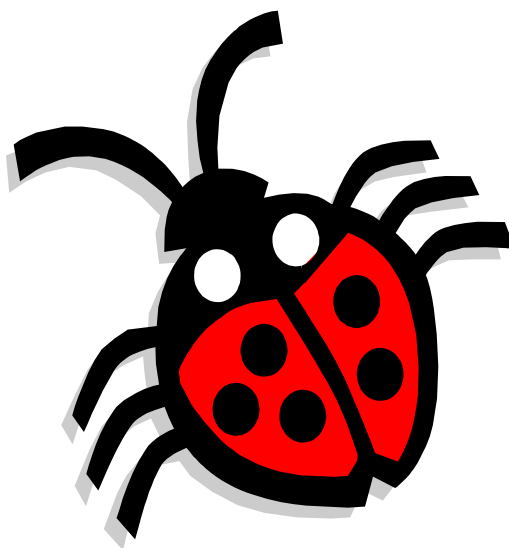
## Spring Doesn't Bug Us!

Name \_\_\_\_\_ Date \_\_\_\_\_ St. # \_\_\_\_\_



### STUDENTS

Skills	✓ - =	✓ =	✓ +=	Teacher
	3 pt.	5 pt.	10 pt.	✓ - ✓ & ✓ +
Understood math vocabulary.				
Followed directions well.				
Used teacher example to compare ladybugs.				
Constructed congruent circles.				
Correctly used the drawing compass.				
Identifies line of symmetry.				
Produces 4 sizes of circles. (1-1/2 measurement)				



**30 points for hanging your "Lady Bug" on the bulletin board, with your Haiku Poem.**

**TOTAL POINTS** \_\_\_\_\_